



BLADDER CANCER RISK BIOCHIP

EARLY DIAGNOSIS CAN MAKE A DIFFERENCE



Powered by Biochip Array Technology

Utilises a biomarker algorithm and clinical data to triage female patients from 'low' to 'high' risk categories for potential risk of bladder cancer.



Biochip allows for **better patient management** by identifying female patients at risk of bladder cancer.



Biochip enables clinicians to **intervene early** and provide treatment at the onset of bladder cancer.



Biochip's novel combination of biomarkers could help clinicians **reduce undiagnosed bladder cancer** in women.

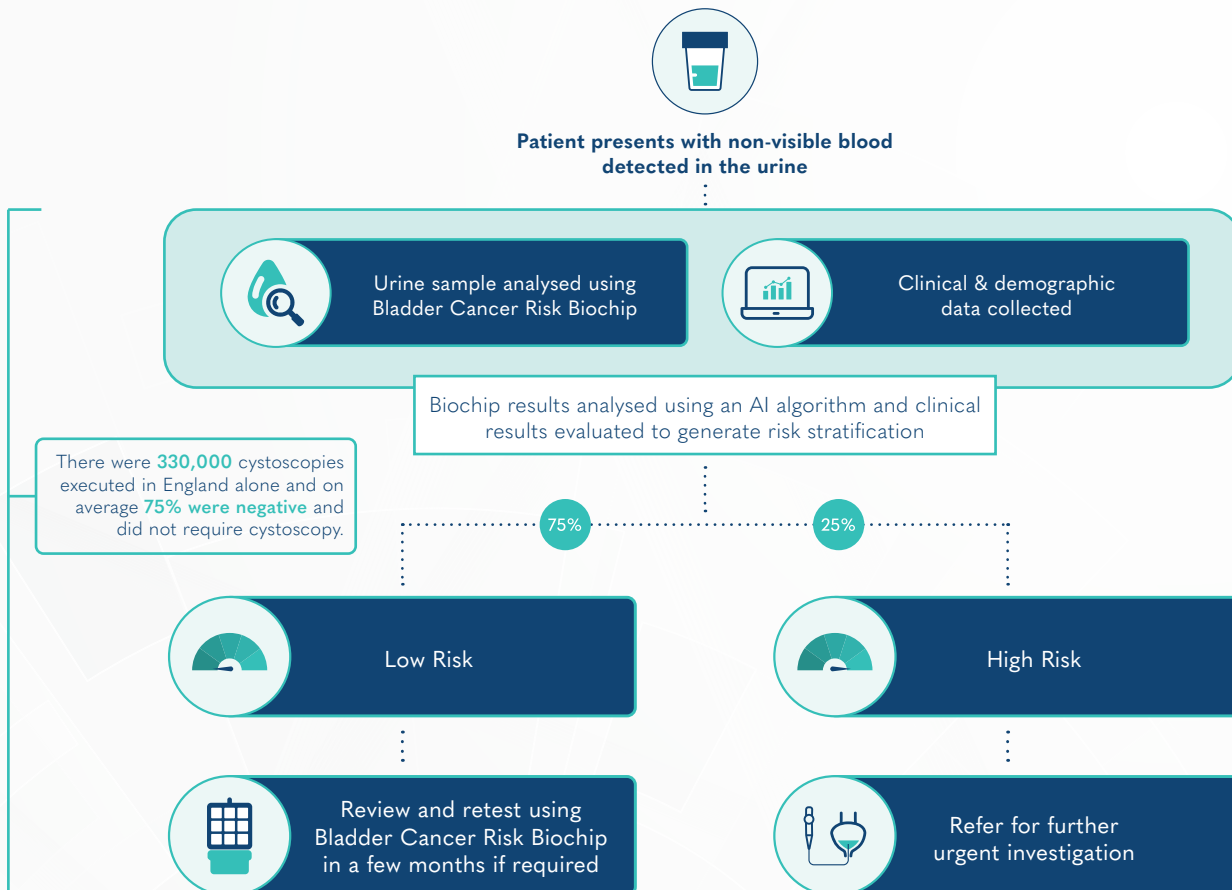


Biochip **reduces the need for costly, risky, and invasive cystoscopy referrals** for low-risk patients.

Data-Driven Risk Stratification

A recent study by Randox demonstrated a novel combination of four biomarkers to be clinically significant in identifying female patients with bladder cancer.






A patient triage pathway using Randox Biochip Array Technology allows patients at highest risk to be referred for urgent cystoscopy while reducing the need for cystoscopy for those at low risk.



Biomarkers

IL-12p70	IL-13	Midkine	Clusterin
----------	-------	---------	-----------

Product Information

 Sample Type Urine	 Samples Per Cartridge 2	 Sample Volume 400µl	 Result Type Quantitative	 Time to Result 60 Minutes
---	---	---	---	---

Bladder Cancer Risk Biochip – For use on the Evidence MultiSTAT analyser

marketing@randox.com | randox.com