

RANDOX

EARLY DIAGNOSIS CAN MAKE A DIFFERENCE

Acute Kidney Injury Test

Biochip Array provides preoperative risk assessment and postoperative risk monitoring to triage patients undergoing cardiac or orthopaedic surgery to mitigate the possibility of acute kidney injury (AKI).



153 million tests
performed globally



£440m Invested
in Biochip



203 patents



Cardiac or Orthopaedic Surgery Increase the Risk of AKI

20%

of AKI cases
are preventable

1 in 3

patients undergoing
orthopaedic surgery
develop AKI

1 in 4

patients undergoing
cardiac surgery
develop AKI

1.7 Million

deaths attributed
annually to AKI

Current Triaging is Inadequate

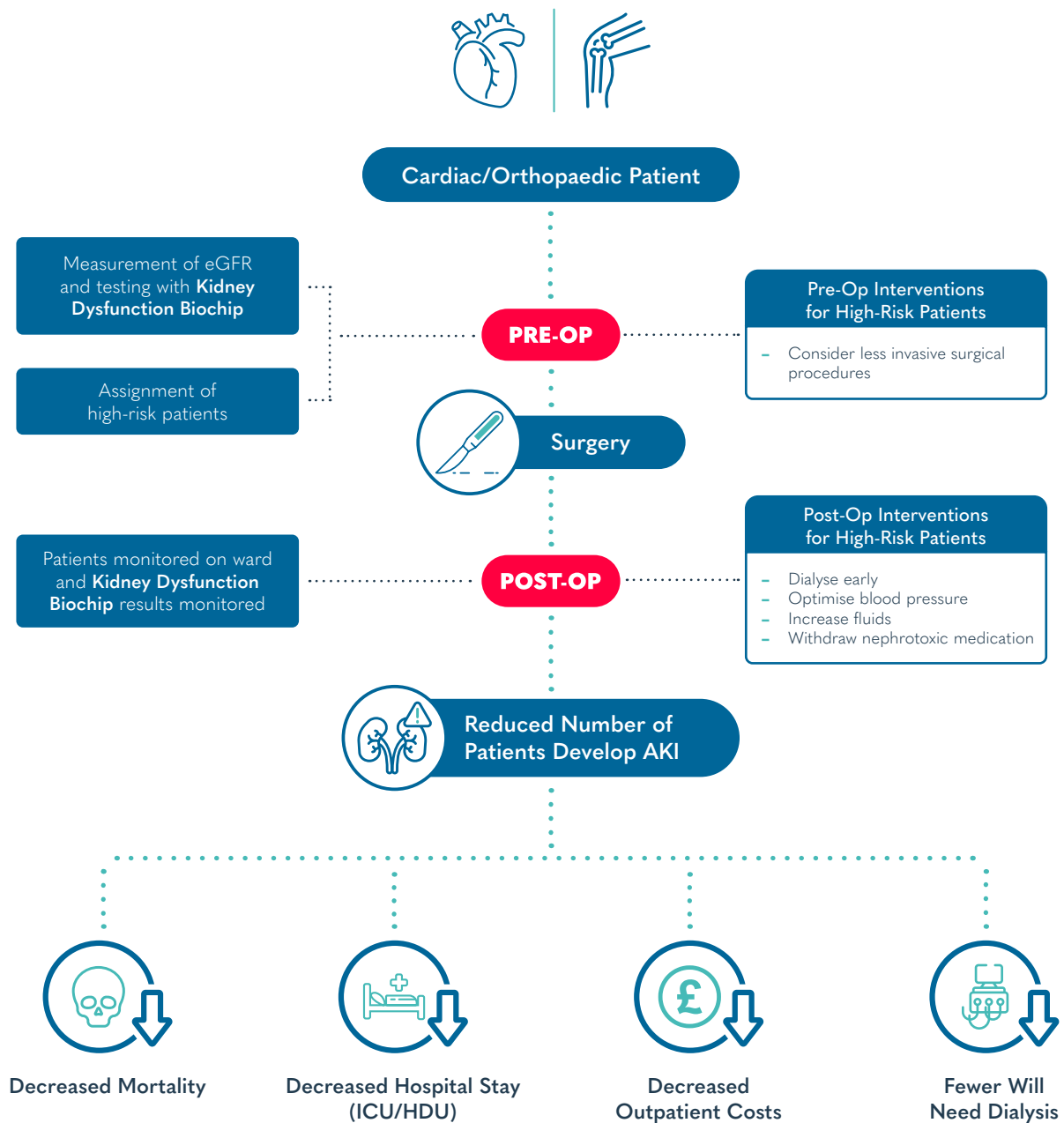
In most cases where creatinine is elevated and eGFR is decreased kidney damage has already started.

Biochip Reduces Costs

With 615,000 AKI cases per year in the UK, Biochip could save £600 million.

Used in research settings to date.

Patient Pathway



BIOMARKERS TESTED			
sTNFR1	sTNFR2	H-FABP	Midkine

Why Biochip?

Reduces costs by decreasing length of hospital stays

Monitors the **effectiveness of postoperative treatments**

Rapid results within 60 minutes

Early detection and patient management is key